

# **Key populations: Emerging trends in sexual health data**

**Katy Sinka**

Head of STI section, UKHSA

# There was an increase in STI diagnoses in England between 2002 and 2023

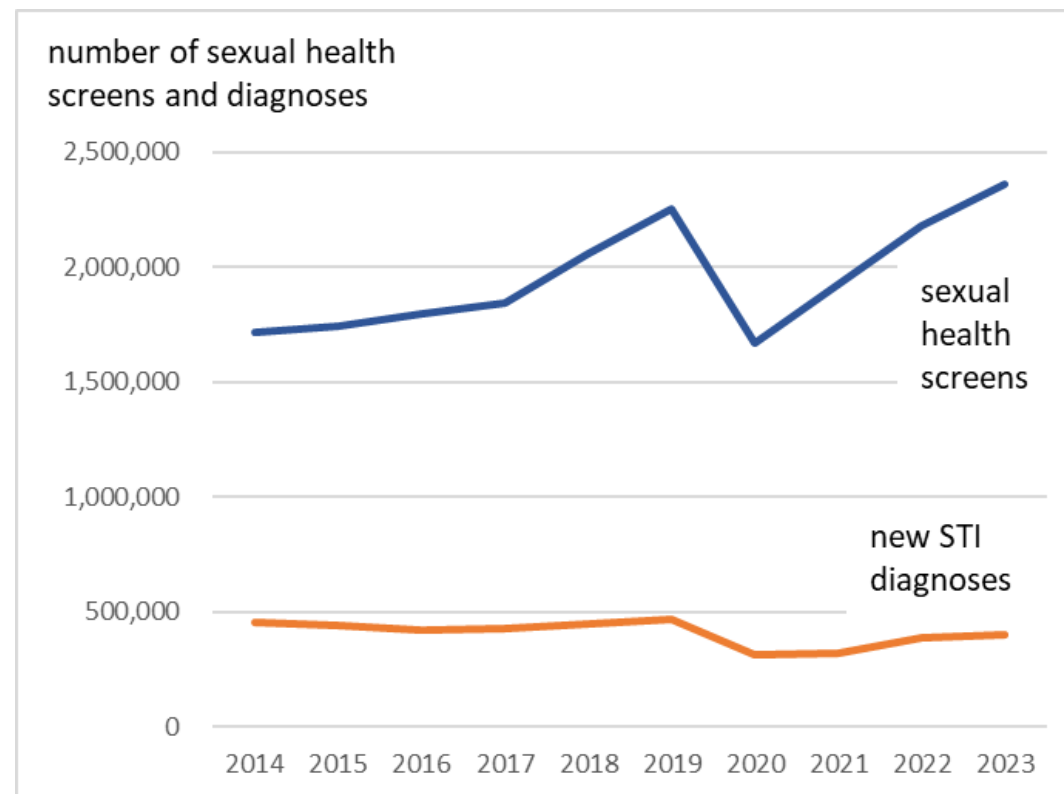
**401,800**

New STI diagnoses

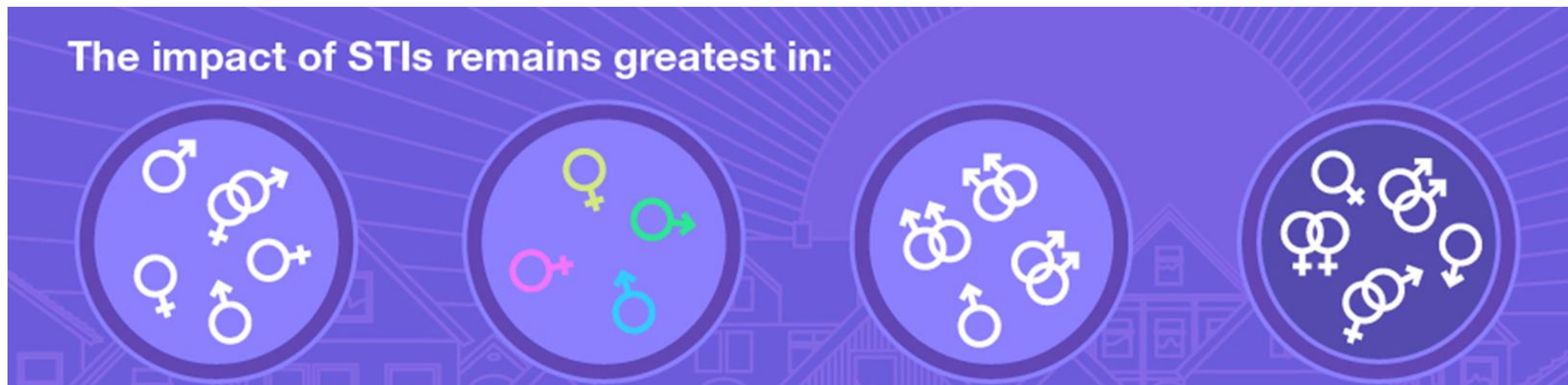


+5%

<https://www.gov.uk/government/statistics/sexually-transmitted-infections-stis-annual-data-tables>



# Higher STI rates in key populations



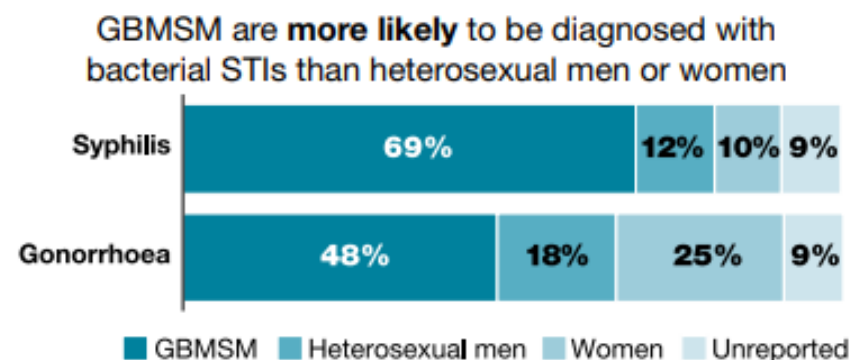
**Young  
people**

**People of  
Black  
Caribbean  
ethnicity**

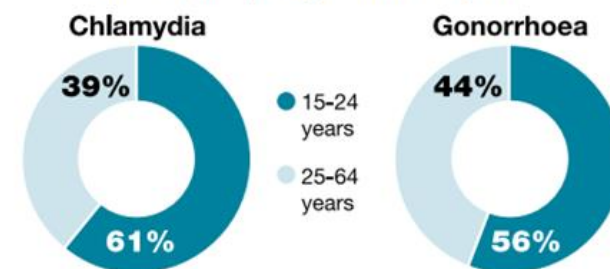
**Gay, bisexual  
& other men  
who have sex  
with men**

**People living  
in the most  
deprived  
areas**

# Inequality: Sexual Health

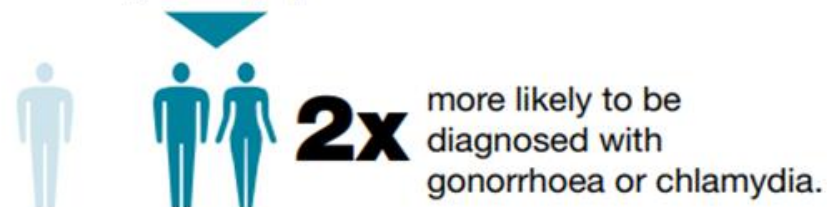


Among heterosexuals attending sexual health services, most chlamydia and gonorrhoea diagnoses were in people aged 15 to 24 years.

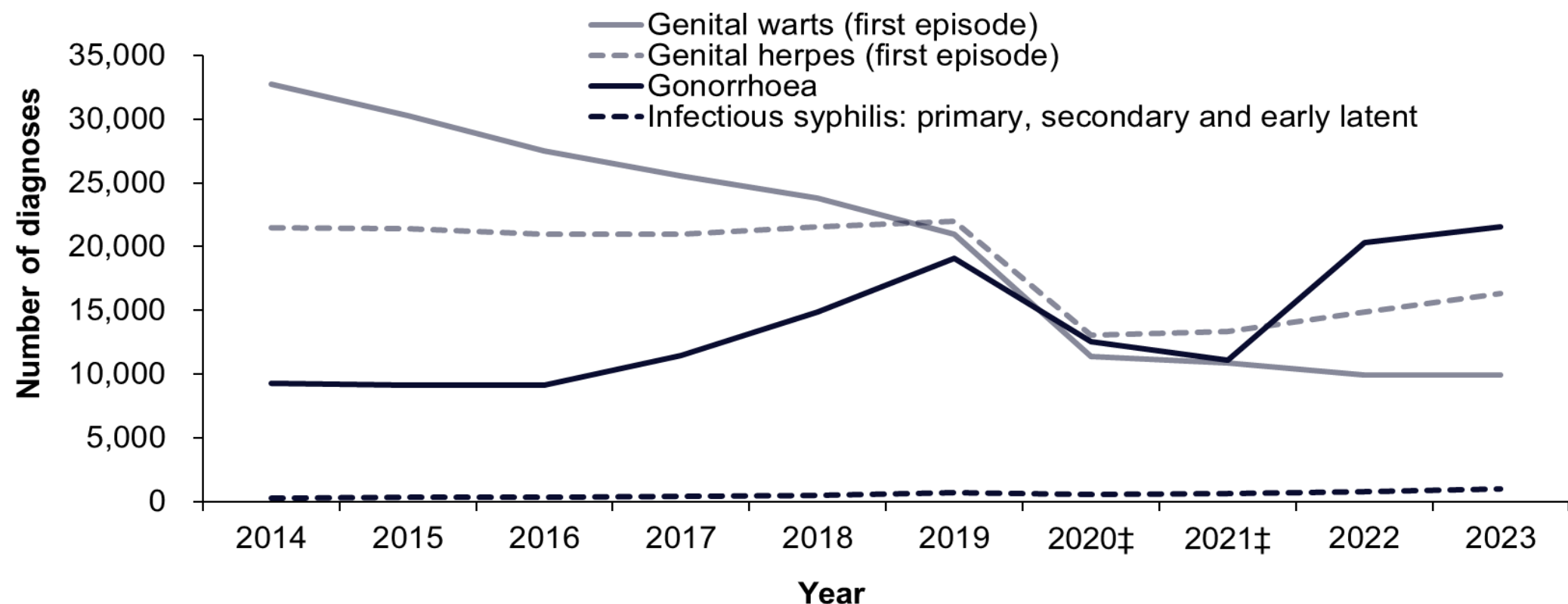


Sexually transmitted infections affect the population unequally by age, gender, ethnicity, sexual orientation and Socioeconomic status.

People of **black ethnicity** have **disproportionately higher** diagnosis rates of bacterial STIs compared to the general population.



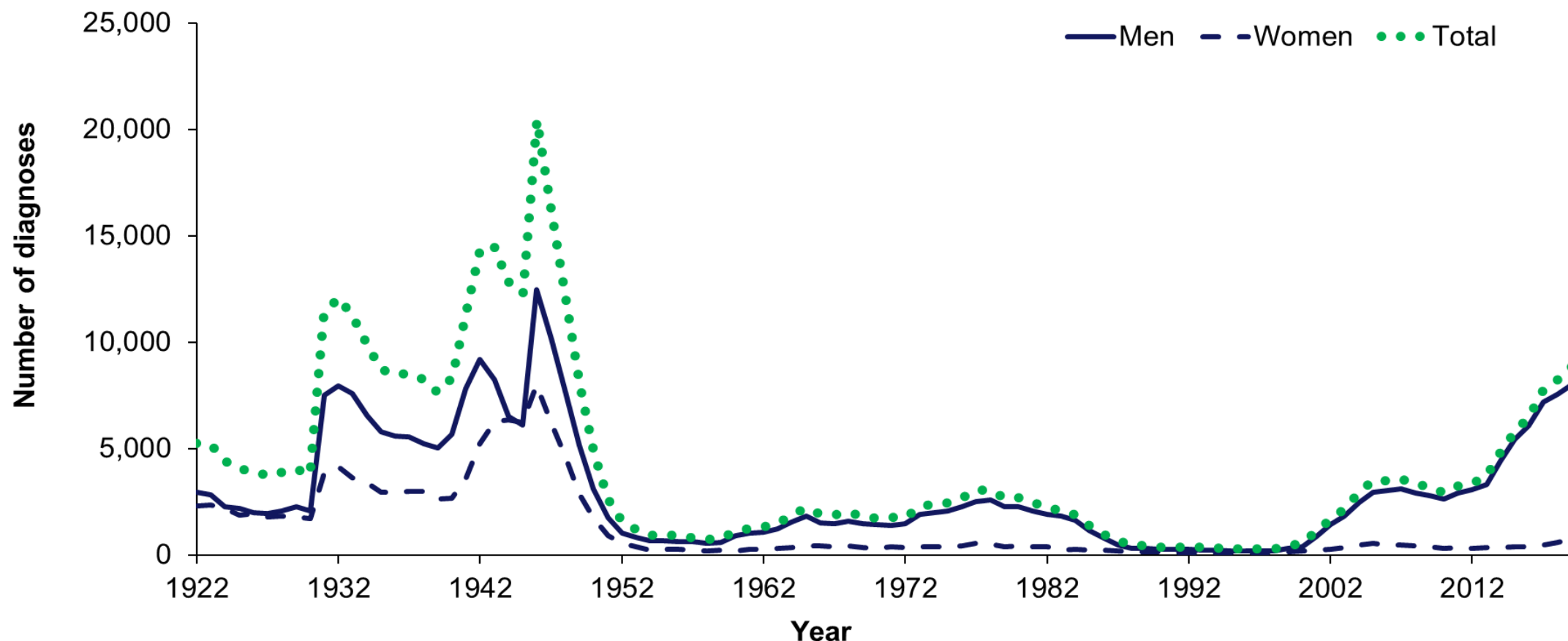
# Number of STI diagnoses among women: England, 2014 to 2023



†Figures reported in 2020 and 2021 are notably lower than previous years due to the disruption to SHSs during the national response to the COVID-19 pandemic

[UK Health Security Agency: 2023 STI slide set \(updated: version 2.0, published 17 July 2024\)](#)

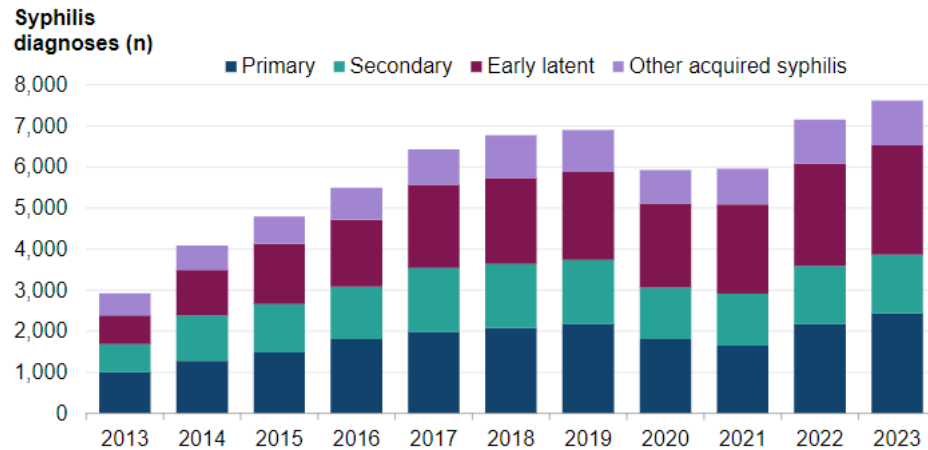
# Number of infectious syphilis diagnoses by gender: UK, 1922 to 2019



UK Health Security Agency: 2023 STI slide set (version 1.0, published 4 June 2024)

# Syphilis in GBMSM

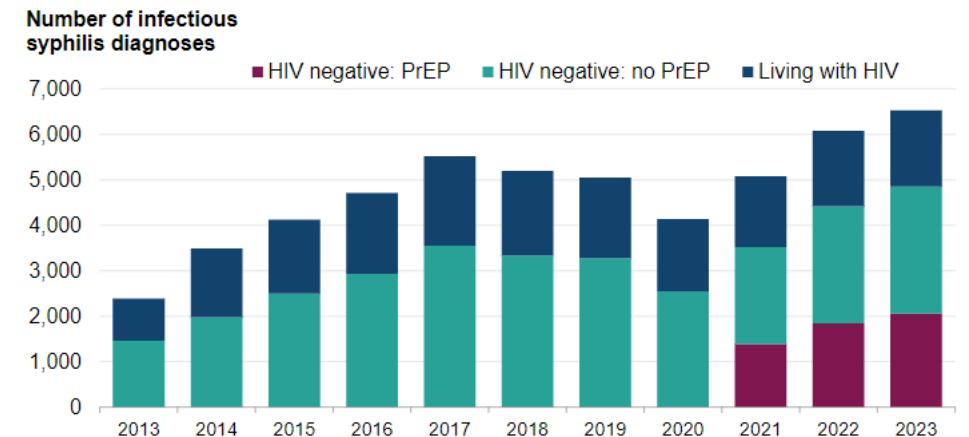
## Diagnoses of syphilis by stage of infection among GBMSM accessing SHSs, England, 2013 to 2023



Gay, bisexual and other men who have sex with men remain the largest group affected 69% of diagnoses of infectious syphilis 6,527 in 2023 (+ a further 927 late latent and other diagnoses)

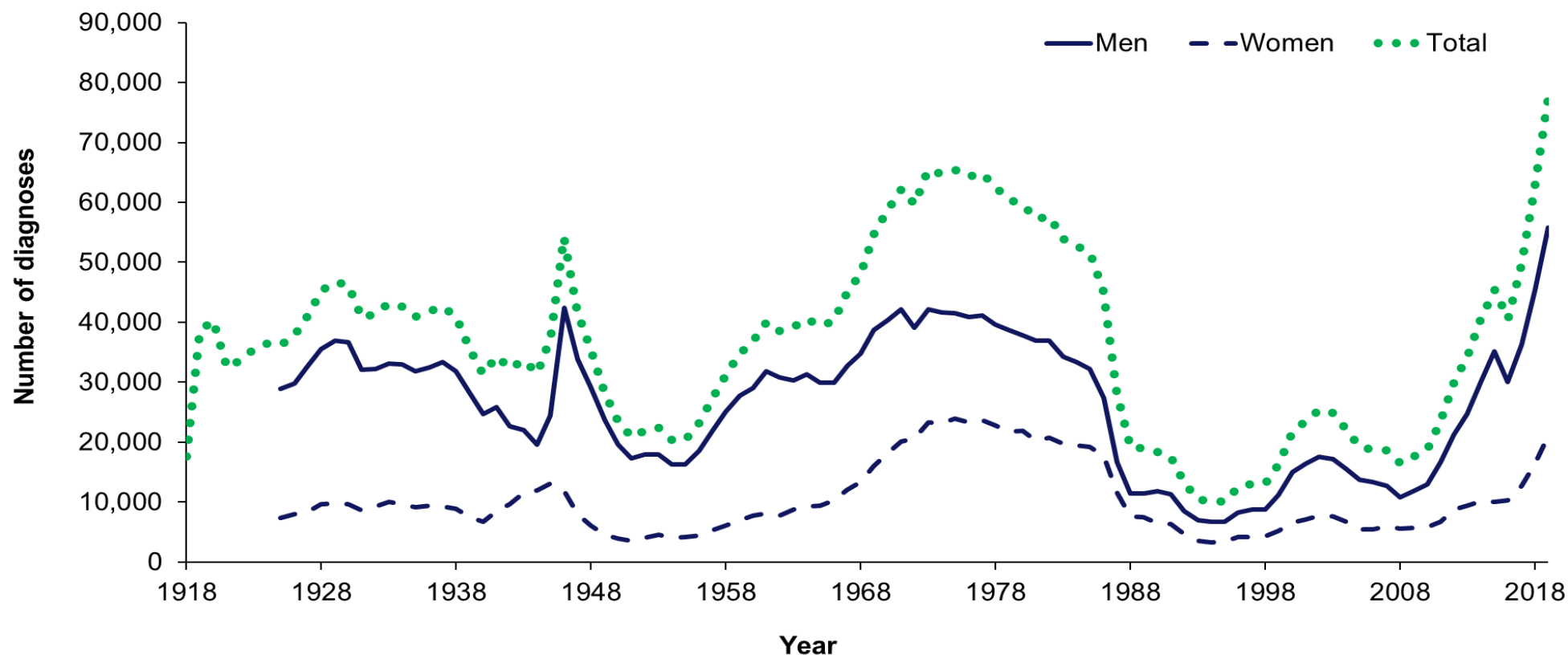
- Rates of syphilis remain higher among GBMSM living with HIV
- The proportion decreased from 39% (924 of 2,390) to 26% (1,670 of 6,527) between 2013 and 2023

## Infectious syphilis diagnoses among GBMSM accessing SHSs by HIV and PrEP use status, England, 2013 to 2023



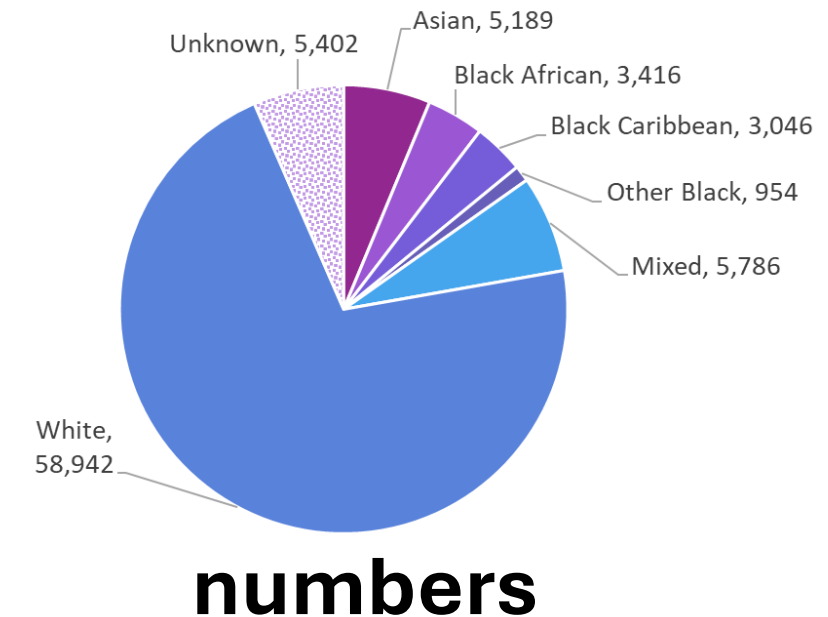
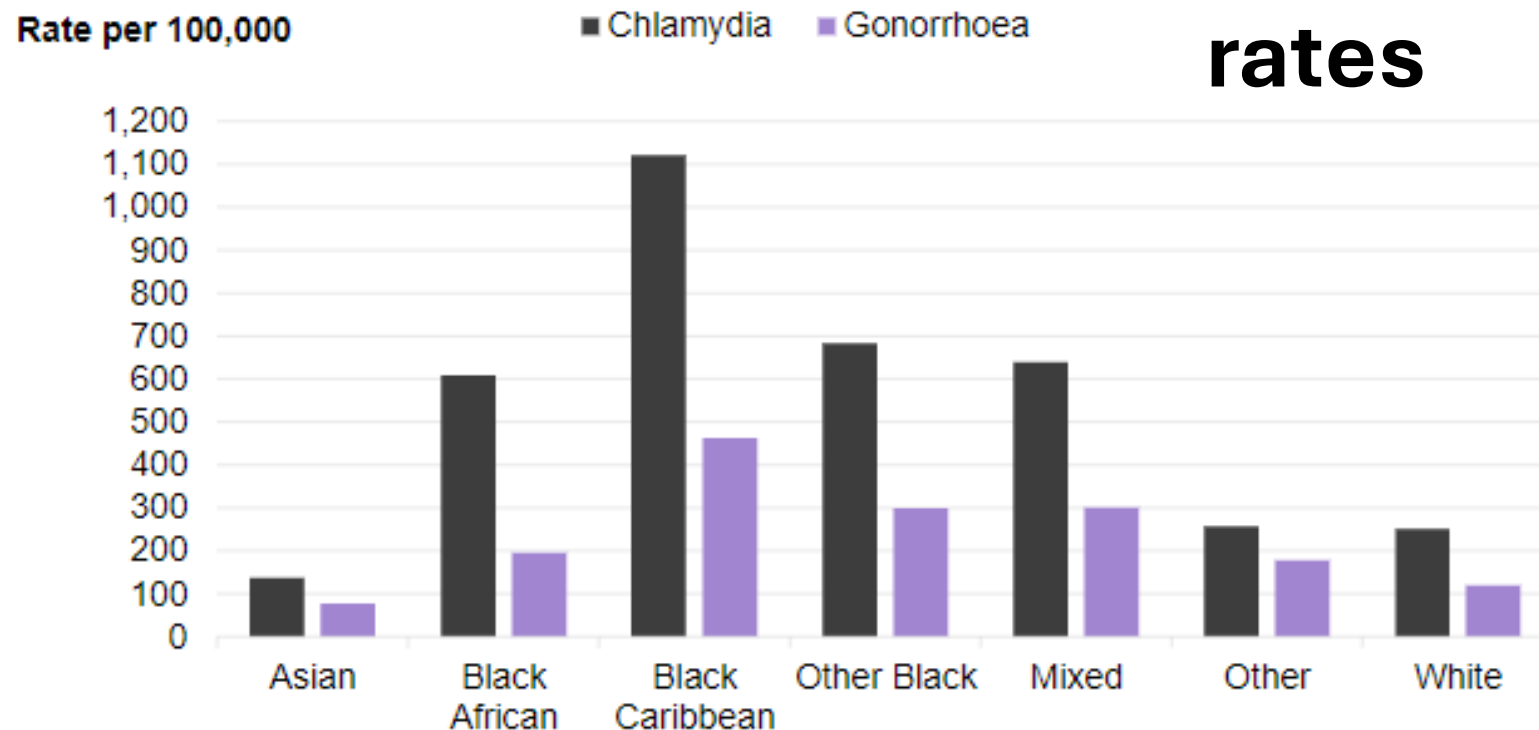
Source: <https://www.gov.uk/government/publications/tracking-the-syphilis-epidemic-in-england>

# Number of gonorrhoea diagnoses by gender: UK, 1918 to 2019



UK Health Security Agency: 2023 STI slide set (version 1.0, published 4 June 2024)

# People of Black ethnicities have lower numbers of gonorrhoea diagnoses, but higher rates



Data source: [GUMCAD STI Surveillance System](#) data from all local authority commissioned sexual health services in England



# Acknowledgements

- All sexual health services
- Stephanie Migchelsen
- Ana Karina Harb
- Tika Ram
- Hamish Mohammed
- The GUMCAD team
  
- [GUMCAD@ukhsa.gov.uk](mailto:GUMCAD@ukhsa.gov.uk)