

# STIs and BAME populations

Webinar: Wednesday 24 July 2019, 1pm

Contact: [hpe@tht.org.uk](mailto:hpe@tht.org.uk)

Twitter: [@HIVPreventionEn](https://twitter.com/HIVPreventionEn)

**HIV PREVENTION ENGLAND**





Public Health  
England

# The Sexual Health of GBMSM and BAME Populations in England

Flavien Coukan

HIV/STI surveillance and prevention scientist  
Blood Safety, Hepatitis, STIs and HIV Division  
Public Health England

Understanding HIV and STIs in BAME populations

THT

24<sup>th</sup> July, 2019



# Abbreviations

- STI - Sexually Transmitted Infections
- GBMSM - Gay and Bisexual men and other Men who have Sex with Men
- BAME - Black, Asian and other Minority Ethnicity
- UAI - Unprotected Anal Intercourse
- GC – Gonorrhoea
- BC - Black Caribbean
- BA - Black African
- M - Mixed ethnicity
- WB - White British
- TV - Trichomonas vaginalis



Public Health  
England

# Outline

- I. STI trends in GBMSM
  
- II. STI trends in BAME populations



Public Health  
England

# I. STI trends in GBMSM

# Gay, bisexual and other men who have sex with men

Syphilis

236%



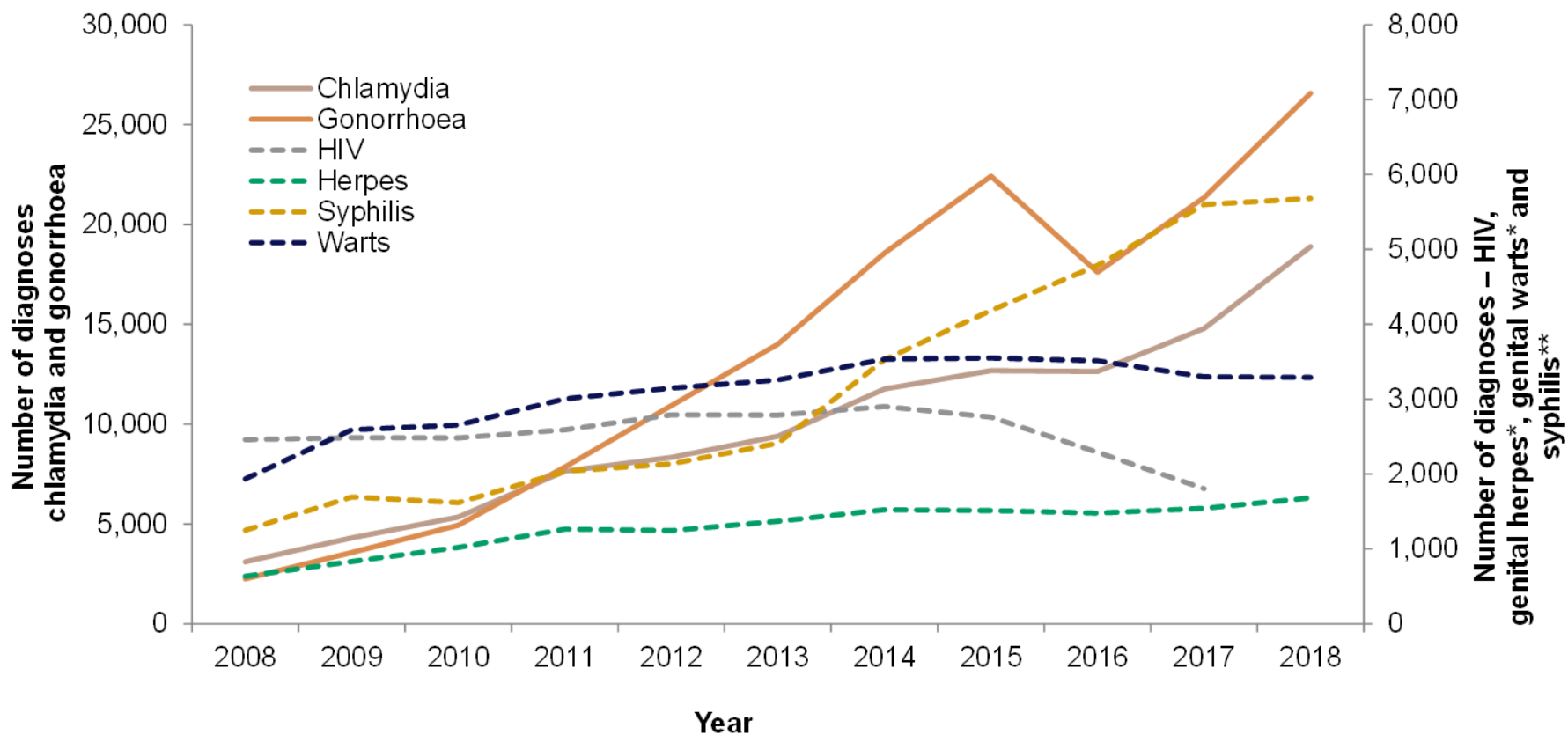
Gonorrhoea

642%



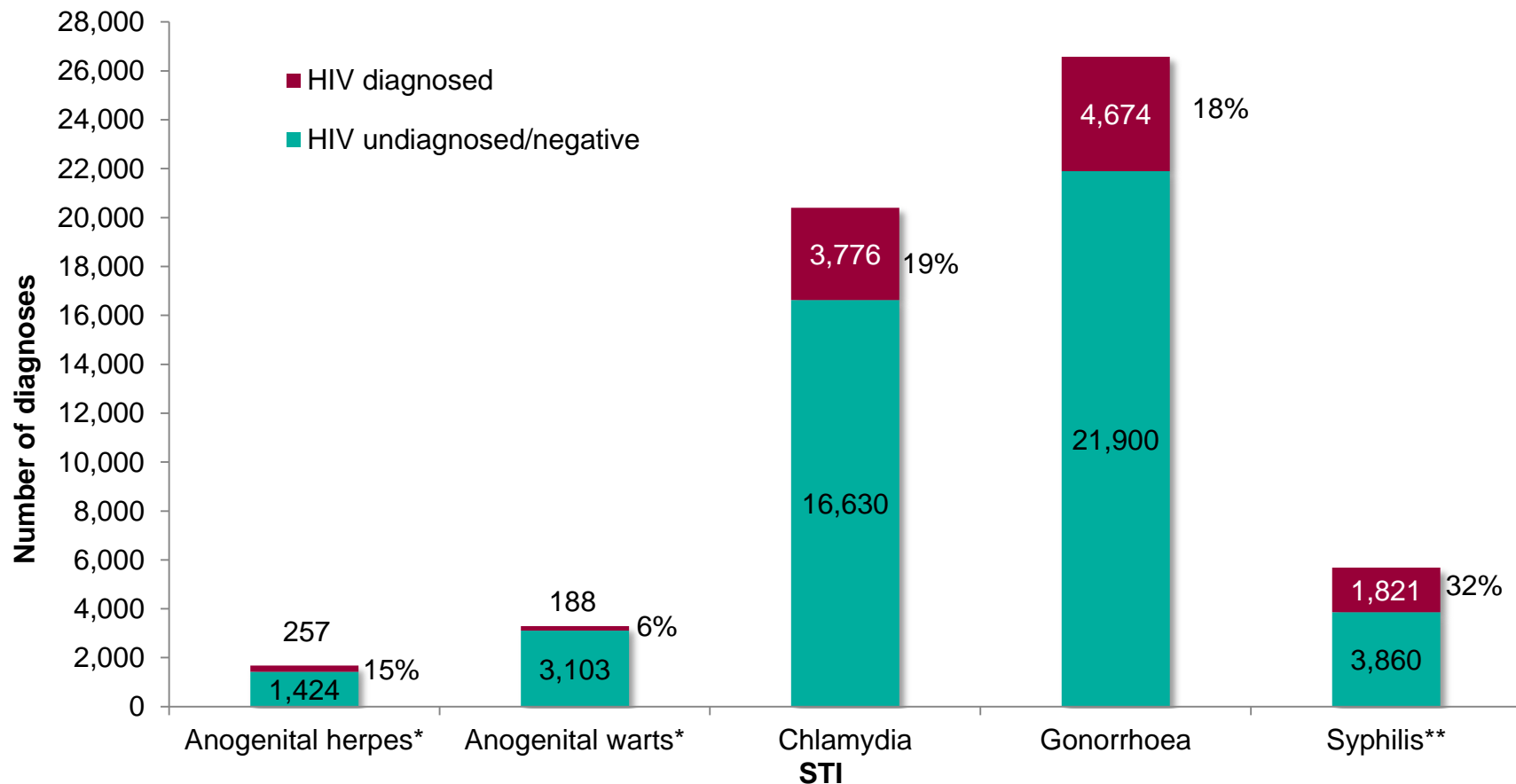
*From 2009 to 2018*

# Number of STI diagnoses among MSM: England, 2009 to 2018



- New HIV diagnoses sourced from the HIV and AIDS Reporting System (HARS; 2018 data unavailable at time of publication). All other data from specialist and non-specialist SHS (GUMCAD returns)
- \* First episode; \*\*Includes diagnoses of primary, secondary and early latent syphilis
- Chlamydia data from 2012 onwards are not comparable to data from previous years (please see 'Notes' slide for more details)
- Data type: service data

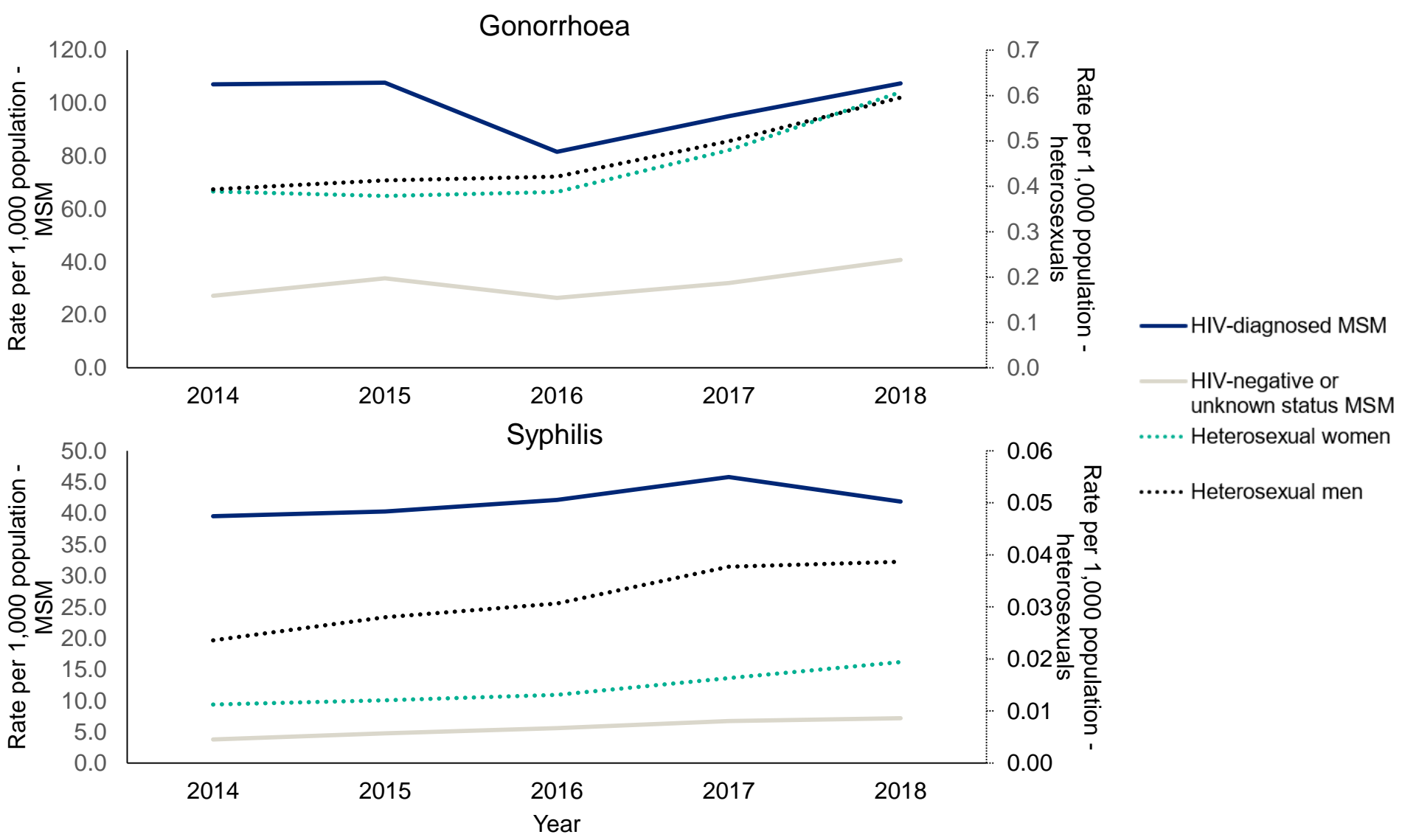
# Number of STI diagnoses among MSM by HIV status: England, 2018



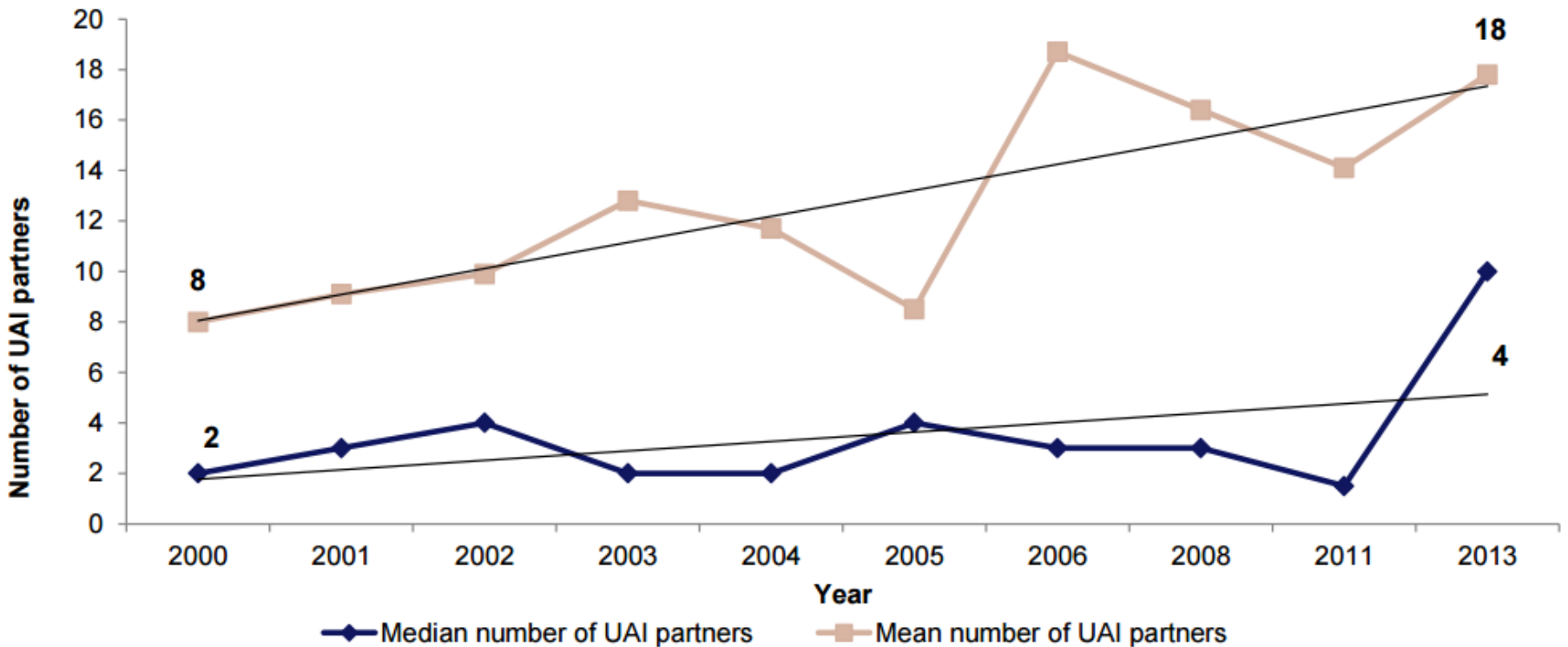
- Data from specialist and non-specialist SHS (GUMCAD returns)
- Percentages represent the proportion of STI diagnoses that were made in MSM known to be HIV positive
- \* First episode; \*\* Includes diagnoses of primary, secondary & early latent syphilis
- Data type: service data



# Rates of gonorrhoea and syphilis by sexual orientation and/or HIV status, England, 2014-18



# Trends in UAI partner numbers in the last year of potential 'transmitters'





Public Health  
England

## II. Sexual health of BAME populations



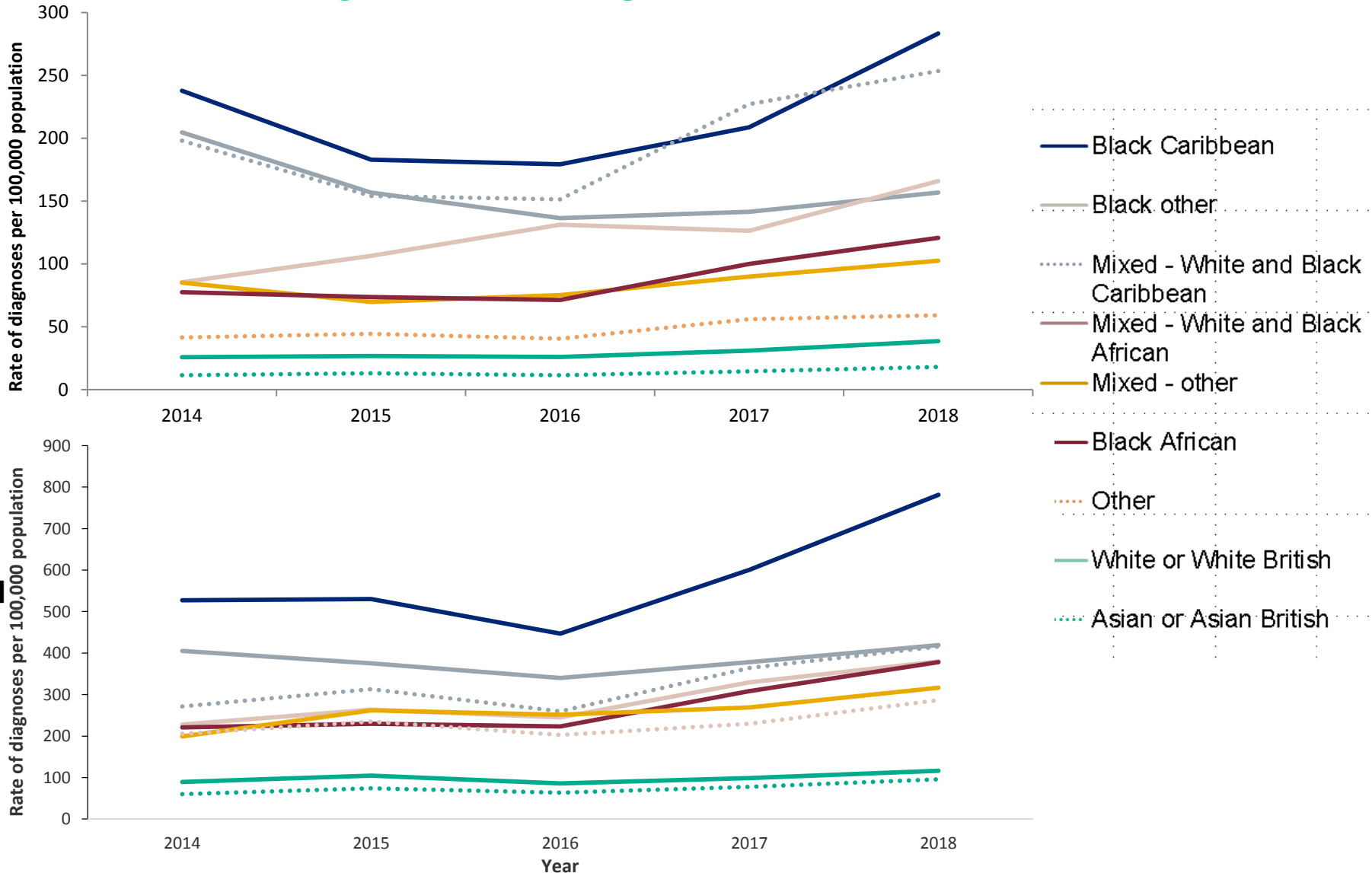
Public Health  
England

## i. Rates of STIs by ethnicity



Public Health  
England

# Gonorrhoea diagnosis rates, by ethnic group and gender, England, 2014-2018

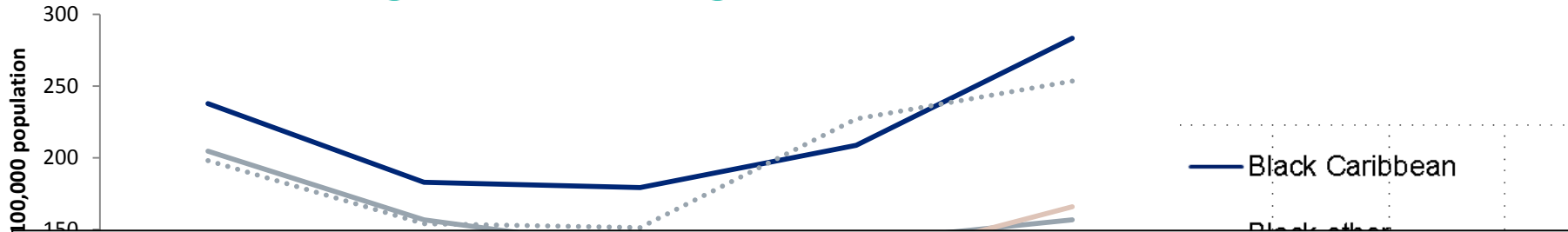


Data source: specialist sexual health services' returns to GUMCAD (April 2019). Note: different scales used on y-axes

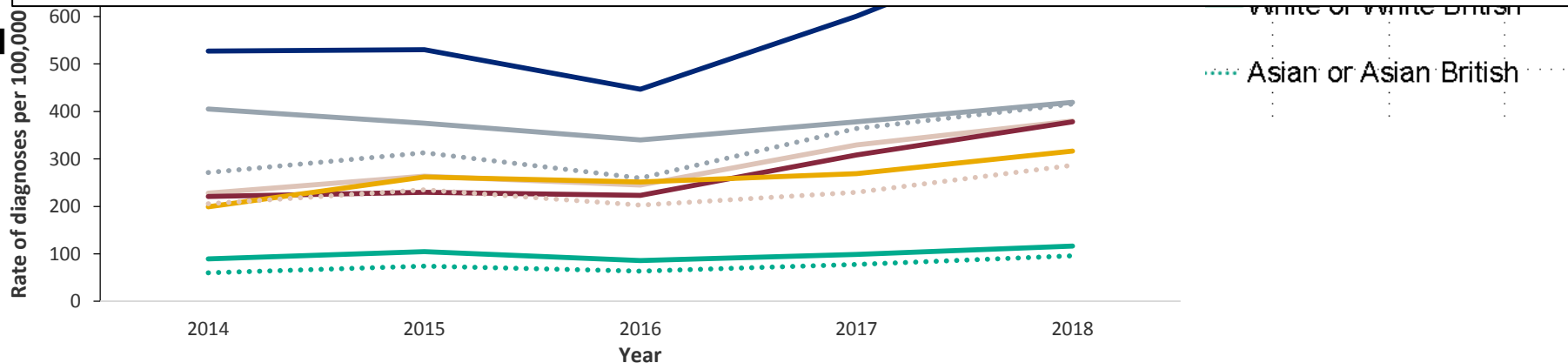


Public Health  
England

# Gonorrhoea diagnosis rates, by ethnic group and gender, England, 2014-2018

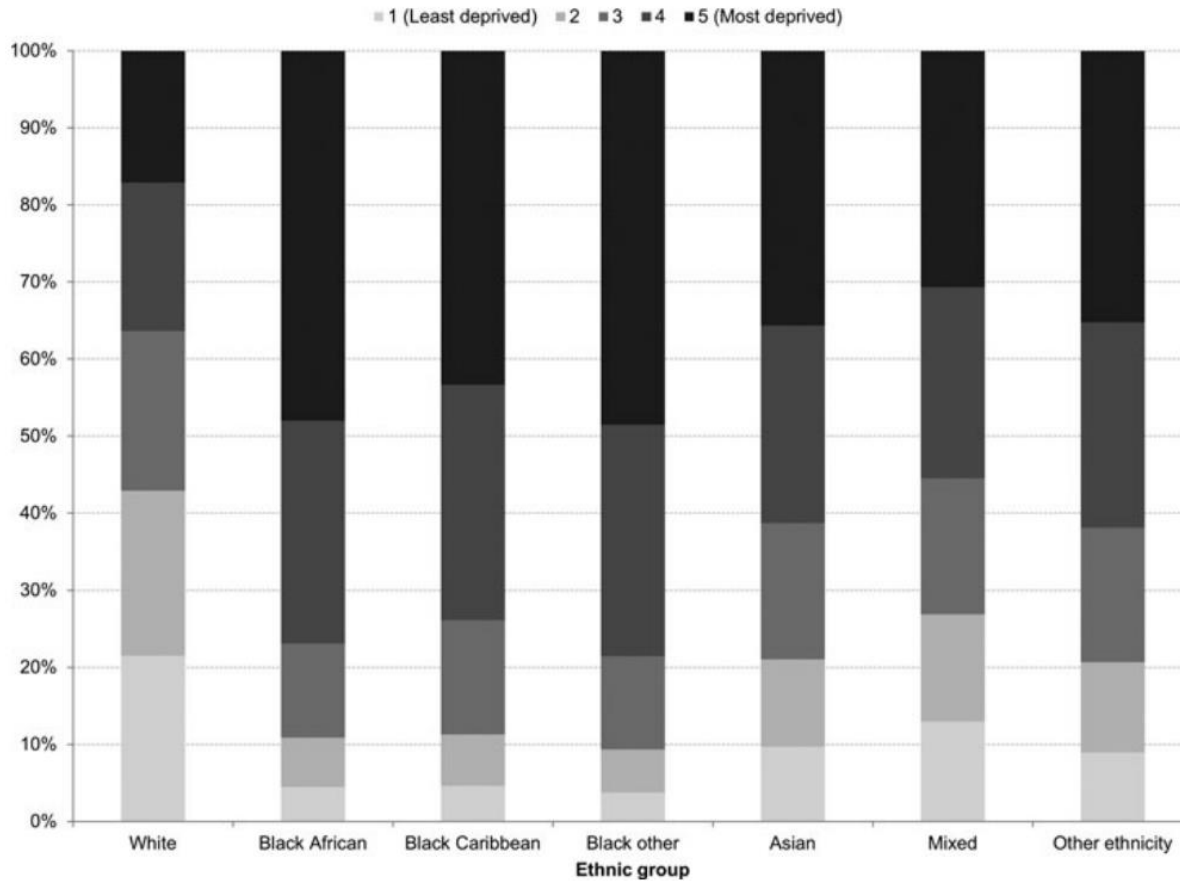


- GC rates are consistently higher amongst people of black Caribbean, black 'other', and mixed white/black Caribbean ethnicities
- GC rates are higher in men vs. women





# What role does socioeconomic deprivation play?



**Fig. 1.** Ethnic variations in the distribution of the index of multiple deprivation in England, 2011.

Source: [Furegato et al 2016](#)



# What role does socioeconomic deprivation play?

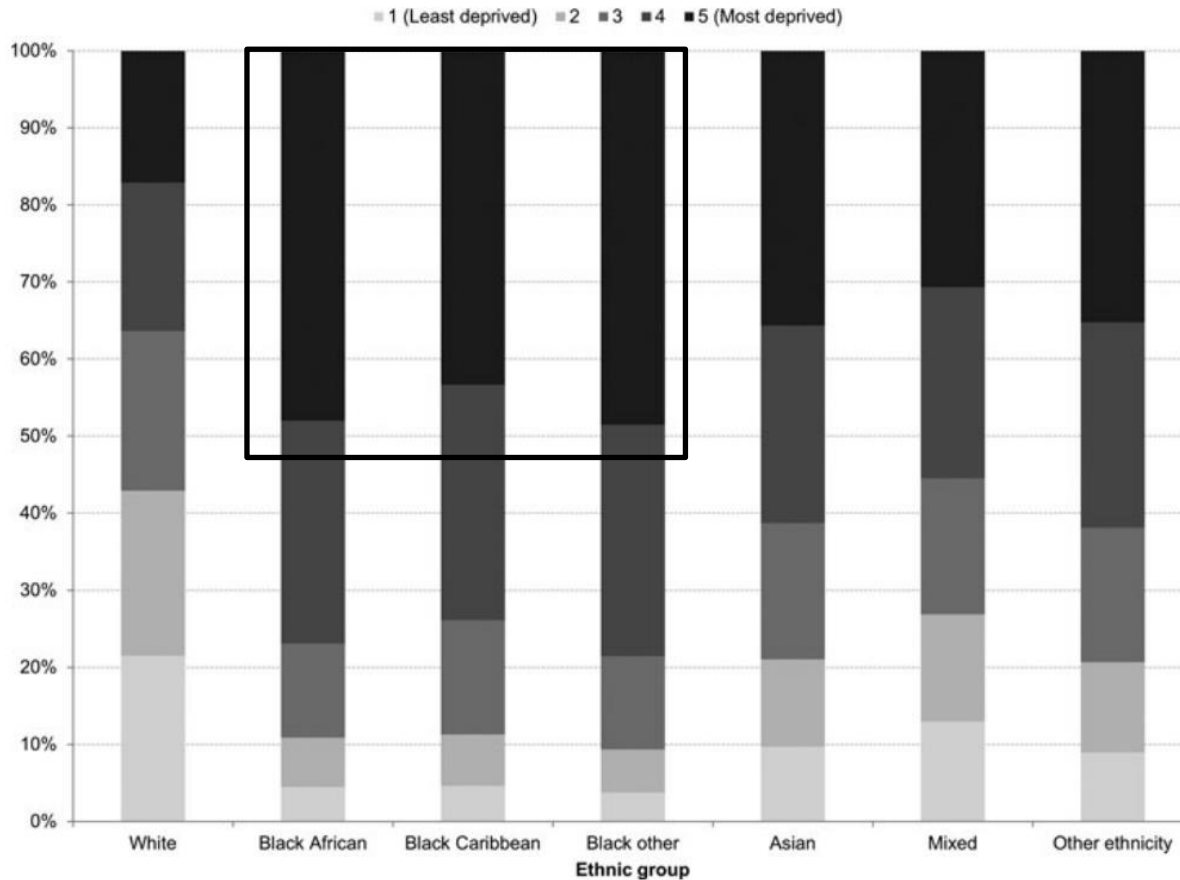


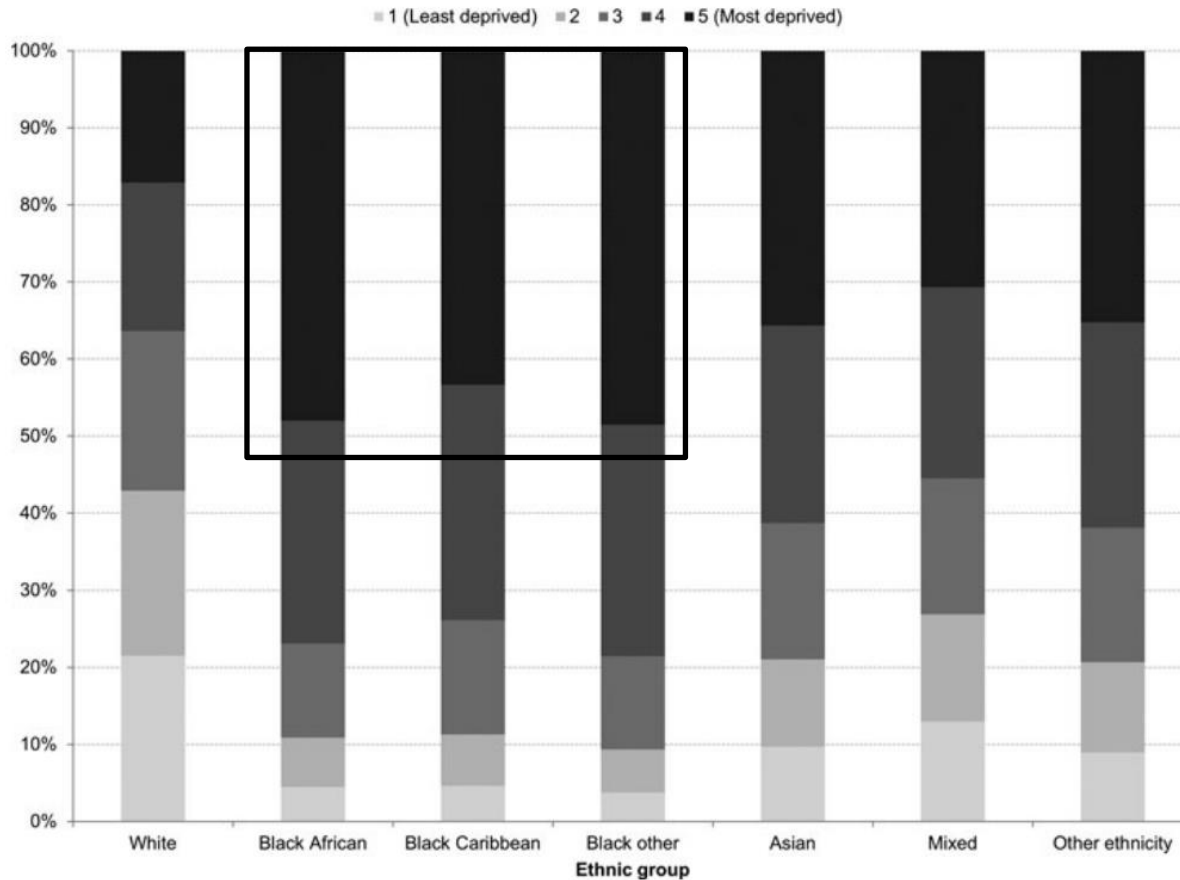
Fig. 1. Ethnic variations in the distribution of the index of multiple deprivation in England, 2011.

Source: [Furegato et al 2016](#)





# What role does socioeconomic deprivation play?



SED explains some, but not all, of the ethnic disparity in STI rates

Fig. 1. Ethnic variations in the distribution of the index of multiple deprivation in England, 2011.

Source: [Furegato et al 2016](#)



Public Health  
England

# Ethnic variations in sexual behaviour, UK, 2010-2012

THE LANCET  
Public Health

ARTICLES | [VOLUME 2, ISSUE 10, PE458-E472, OCTOBER 01, 2017](#)

## Ethnic variations in sexual behaviours and sexual health markers: findings from the third British National Survey of Sexual Attitudes and Lifestyles (Natsal-3)

[Dr Sonali Wayal, PhD](#)   • [Gwenda Hughes, PhD](#) • [Pam Sonnenberg, PhD](#) • [Hamish Mohammed, PhD](#) •

[Andrew J Copas, PhD](#) • [Makeda Gerressu, PhD](#) • [Clare Tanton, PhD](#) • [Martina Furegato, MSc](#) • [Catherine H Mercer, PhD](#)

**Open Access** • DOI: [https://doi.org/10.1016/S2468-2667\(17\)30159-7](https://doi.org/10.1016/S2468-2667(17)30159-7) •



Open access funded by Wellcome Trust



# Ethnic variations in sexual behaviour, UK, 2010-2012

	Men
Lowest median age at sexual debut	BC
Least likely to be sexually competent at sexual debut	BC, BA and M
Greatest median lifetime no. of sex partners	BC
Most likely to report concurrent partners	BA
Most likely to have had condomless sex with 1+ partner in past yr	BC

Key: BA – black African, BC – black Caribbean, M – mixed, WB – white British

Source: [https://www.thelancet.com/journals/lanpub/article/PIIS2468-2667\(17\)30159-7/abstract](https://www.thelancet.com/journals/lanpub/article/PIIS2468-2667(17)30159-7/abstract)



# Ethnic variations in sexual behaviour, UK, 2010-2012

	Men	Women
Lowest median age at sexual debut	BC	WB, BC and M
Least likely to be sexually competent at sexual debut	BC, BA and M	BA and M
Greatest median lifetime no. of sex partners	BC	M
Most likely to report concurrent partners	BA	M
Most likely to have had condomless sex with 1+ partner in past yr	BC	M

Key: BA – black African, BC – black Caribbean, M – mixed, WB – white British

Source: [https://www.thelancet.com/journals/lanpub/article/PIIS2468-2667\(17\)30159-7/abstract](https://www.thelancet.com/journals/lanpub/article/PIIS2468-2667(17)30159-7/abstract)

# Understanding the burden of bacterial sexually transmitted infections and *Trichomonas vaginalis* among black Caribbeans in the United Kingdom: Findings from a systematic review


Sonali Wayal , Catherine R. H. Aicken, Catherine Griffiths, Paula B. Blomquist, Gwenda Hughes, Catherine H. Mercer

Published: December 7, 2018 • <https://doi.org/10.1371/journal.pone.0208315>

## **Systematic literature review**

- Association between bacterial STIs and TV with ethnicity
- Differences between BC and WB people in the prevalence of STI risk behaviours
- Sexual healthcare seeking behaviours
  - N=15 studies

# Understanding the burden of bacterial sexually transmitted infections and *Trichomonas vaginalis* among black Caribbeans in the United Kingdom: Findings from a systematic review

Sonali Wayal , Catherine R. H. Aicken, Catherine Griffiths, Paula B. Blomquist, Gwenda Hughes, Catherine H. Mercer

Published: December 7, 2018 • <https://doi.org/10.1371/journal.pone.0208315>

## Findings

- Greater STI risk due to variations in socio-demographic factors, sexual behaviours and recreational drug use
- Prevalence of early sexual debut, concurrency and multiple partners more common in BC men (vs. white/WB men)
- People of BC ethnicity more likely to access SHS (vs. those of white/WB ethnicity)

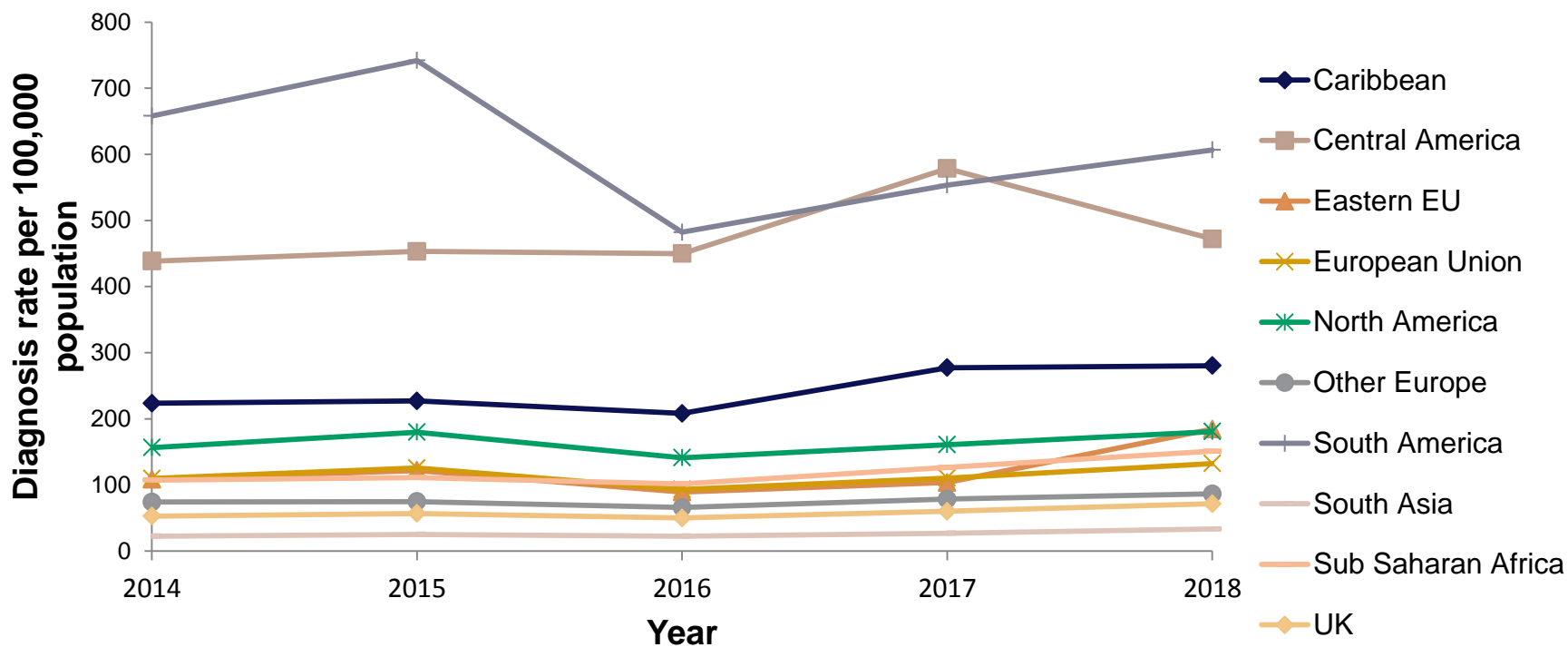


Public Health  
England

## ii. STI rates by region of birth



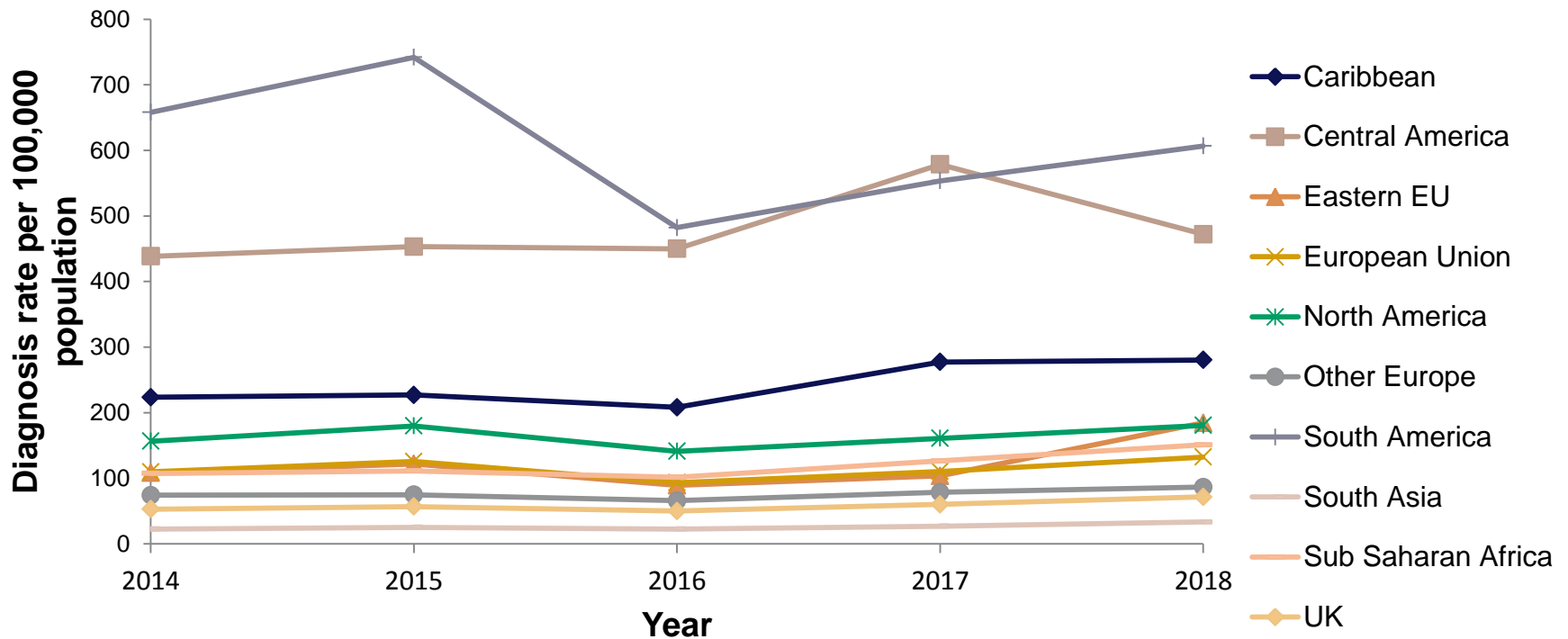
# Gonorrhoea diagnosis rates, by region of birth, England, 2014-2018







# Gonorrhoea diagnosis rates, by region of birth, England, 2014-2018



- Diagnosis rates of gonorrhoea, chlamydia and syphilis are highest in people born in Latin America and the Caribbean



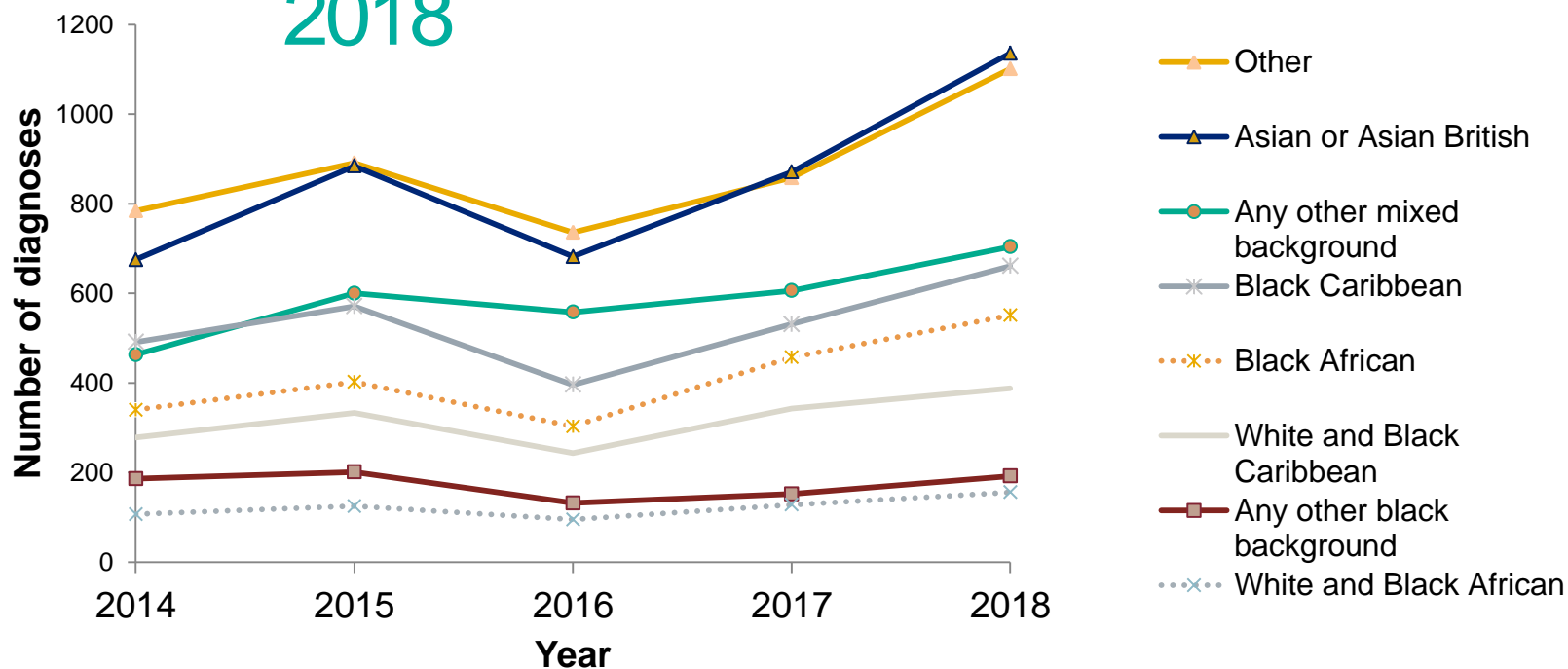
Public Health  
England

## iii. STIs trends in non-white GBMSM



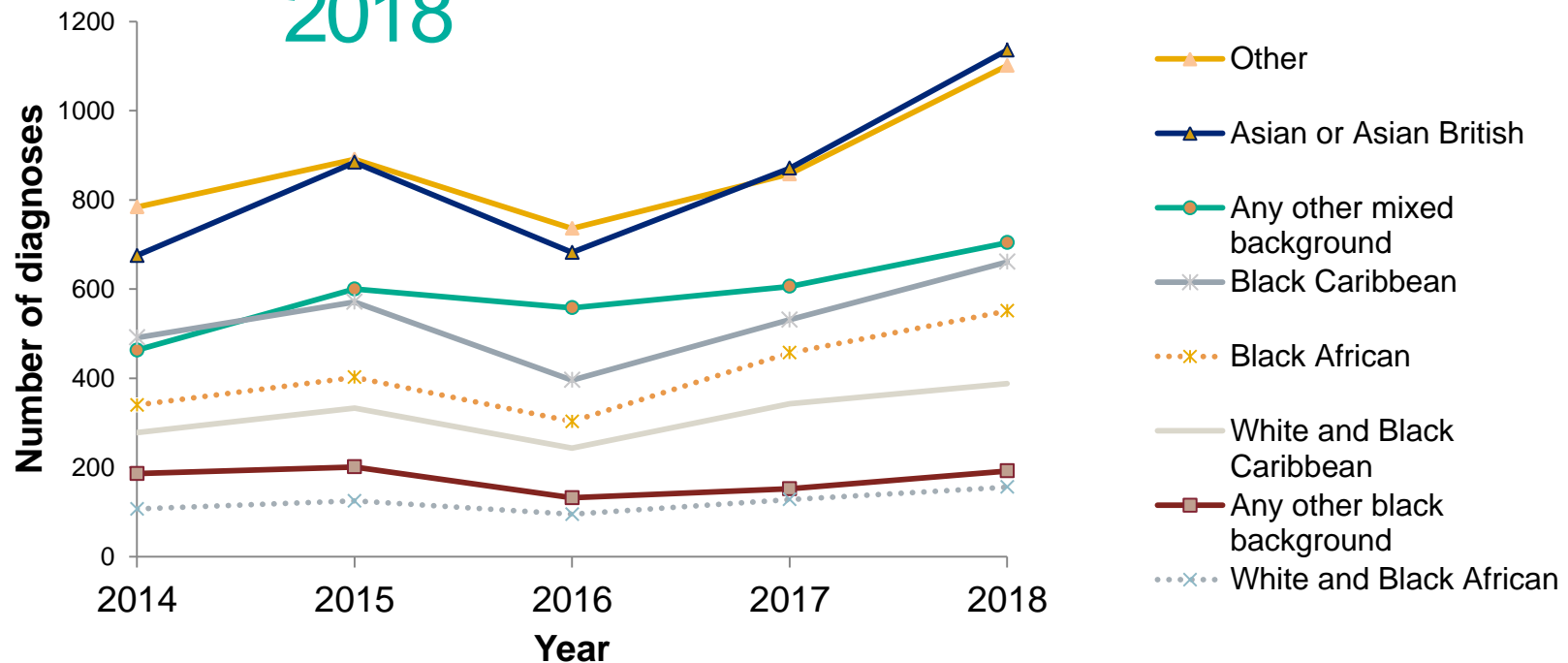
Public Health  
England

# Gonorrhoea diagnoses in non-white GBMSM, by ethnic group, England, 2014-2018





# Gonorrhoea diagnoses in non-white GBMSM, by ethnic group, England, 2014-2018



- GC diagnoses in mixed, Asian and black African GBMSM nearly doubled in the last 5 years
- Amongst non-white GBMSM, STI diagnoses most common in men of Asian and 'other' (25% Chinese ethnicity) groups



Public Health  
England

# BAME sexual health

- Bacterial STI rates are consistently higher in people:
  - Of black Caribbean or black 'other' ethnic groups
  - Born in Latin American and the Caribbean
  
- People of black Caribbean, black African, and mixed ethnicities are most likely to report concurrent or multiple partners



Public Health  
England

# Addressing inequalities in BAME populations

- Conducting and managing a number of initiatives to address this inequality in poor sexual health
- HIV Prevention England to deliver an HIV prevention programme aimed at MSM, black Africans and other groups with higher or emerging burden.
- Academic partnership with the NIHR HPRU into health promotion messages aimed to reduce the incidence of bacterial STIs in people of black Caribbean ethnicity.



Public Health  
England

# Contributors to BAME report

## —PHE

- Flavien Coukan
- Ammi Shah
- Natasha Ratna
- Sonia Rafeeq
- Cuong Chau
- Sara Croxford
- Luis Guerra
- Gwenda Hughes
- Hamish Mohammed

## —Advisory Group

- BHA
  - Priscilla Nkwenti
- FPA
  - Bekki Burbidge
- NAT
  - Yusef Azad
- Naz
  - Marion Wadibia
- UCL (HPRU Theme A)
  - Sonali Wayal
- THT
  - Chamut Kifetew
  - Marc Thompson

# Questions?

**HIV PREVENTION ENGLAND**

